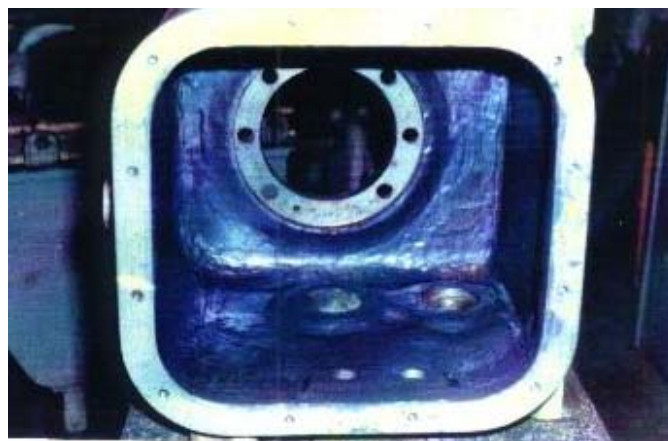




*Worldwide repairs carried out with PolymerMetal®*

REP-# 130



A cracked housing of a hydraulic pump in a steering gear made off aluminium was repaired using MM-metal SS-steelceramic with Hardener yellow. Afterwards the whole housing was coated with VP 10-017 in order to seal the pores in the casting.

**MultiMetall**  
the MetalExistenceCompany®